



Supplier of Control Instrumentation to the South African Electrical Industry

## MC 760/UMC 760 - NETWORK ANALYZER, MC 750/UMC 750 - NETWORK RECORDER

### USE

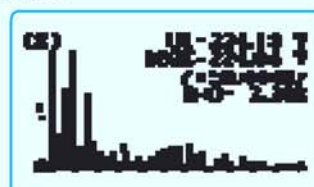
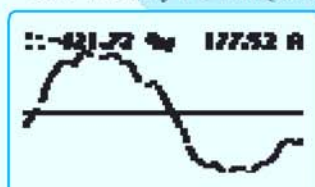
The MC 760/UMC 760 network analyzer is used for permanent analysis of electric voltage quality in compliance with the EN 50160 standard. Records are stored in the internal memory for the period of the last 3 years. Moreover, more than 170,000 deviations of the measured quantities from the standard values are stored, which enables finding of eventual reasons for the problems on network. Optional limits and required quality in a monitored period can be defined for each monitored characteristic.

The meter measures and records the following characteristics:

- Frequency deviations
- Voltage deviations
- Voltage dips
- Voltage interruptions
- Voltage unbalances
- Over-voltages
- Fast voltage changes
- Flicker intensity
- THD
- Harmonics

### Main features are:

- Evaluation of the quality of electric voltage in compliance with EN 50160 (only MC 760/UMC 760)
- Measurements of instantaneous values of more than 140 quantities (U, I, P, Q, S, PF, PA, f,  $\phi$ , THD, MD, energy, energy price by tariffs, etc.).
- Accuracy class 0.5
- Harmonic analysis of phase, phase-to-phase voltages and currents up to the 63<sup>th</sup> harmonic (only MC 760/UMC 760)
- Recording up to 32 measured quantities and alarms in the internal memory (8 MB flash - MC 760/UMC 760, 4 MB flash - MC 750/UMC 750)
- Measurements of 40 minimal and maximal values in different time periods
- 32 adjustable alarms
- Wide frequency range from 16 Hz to 400 Hz
- RS 232/RS 485 communication up to 115,200 bit/s or Ethernet communication
- MODBUS and DNP3 communication protocol
- MMC memory card for data transmission, setting and upgrading
- Up to 4 inputs or outputs (analogue outputs, pulse outputs, alarm outputs, tariff inputs, pulse input, analogue input, bistable alarm, digital input)
- Universal or AC power supply
- Graphical LCD 128 x 64 dots with illumination
- Automatic range of nominal current up to 5 A and nominal voltage up to 500 V
- Adjustable tariff clock, display of electric energy consumption in optional currency
- Multilingual support
- User-friendly PC MiQen software



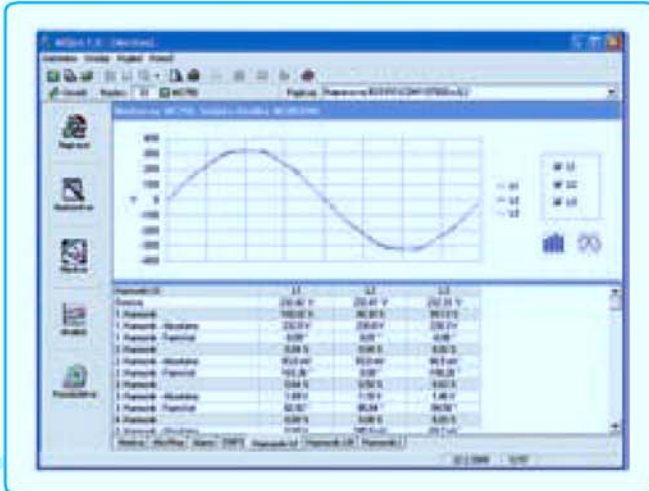
E1	332.55	var
E2	54.74	var
E3	2.73	var
E4	21.58	var
<b>T</b>	<b>411.56</b>	<b>var</b>

<b>Active Power</b>	
var	+381.23
<b>P</b>	<b>132.47</b>
var	+13.53



*Supplier of Control Instrumentation to the South African Electrical Industry*

## MC 760/UMC 760 - NETWORK ANALYZER, MC 750/UMC 750 - NETWORK RECORDER



### Handling the costs

A special meter function is cost evaluation of energy (active, reactive and total) by tariffs. The meter itself enables tracing the energy costs in optional currency. The meter calculates consumption in optional currency by means of the adjustable tariff clock and electric energy price.

### Input / output modules

The modules are available with double inputs/outputs using a common connection contact (except a bistable alarm module - 1 output, 3 terminals). The meter is available without, with one or with two modules. The following modules are available:

- Alarm output 2 outputs
- Analogue output 2 x 20 mA outputs
- Pulse output 2 outputs
- Tariff input 2 inputs
- Bistable alarm output 1 output
- Additional communication port (COM2)
- Pulse input
- Analogue Input
- Digital input